



VASS PARTNER SCHOOL 2010 AP MATH, SCIENCE, AND ENGLISH TEST RESULTS



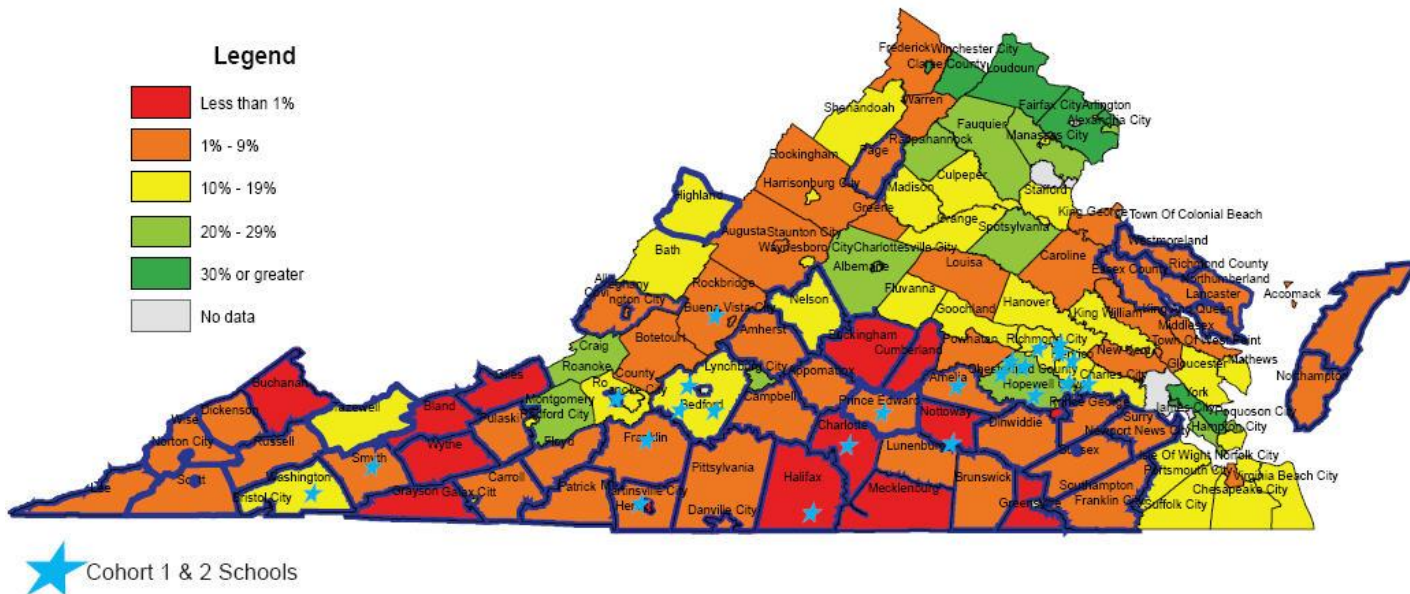
Elements of Success



VIRGINIA ADVANCED STUDY STRATEGIES

Administering Virginia's Advanced Placement Program in cooperation with the National Math & Science Initiative

Virginia AP 2007 Student Participation Data from College Board
(high poverty school divisions are outlined in blue)

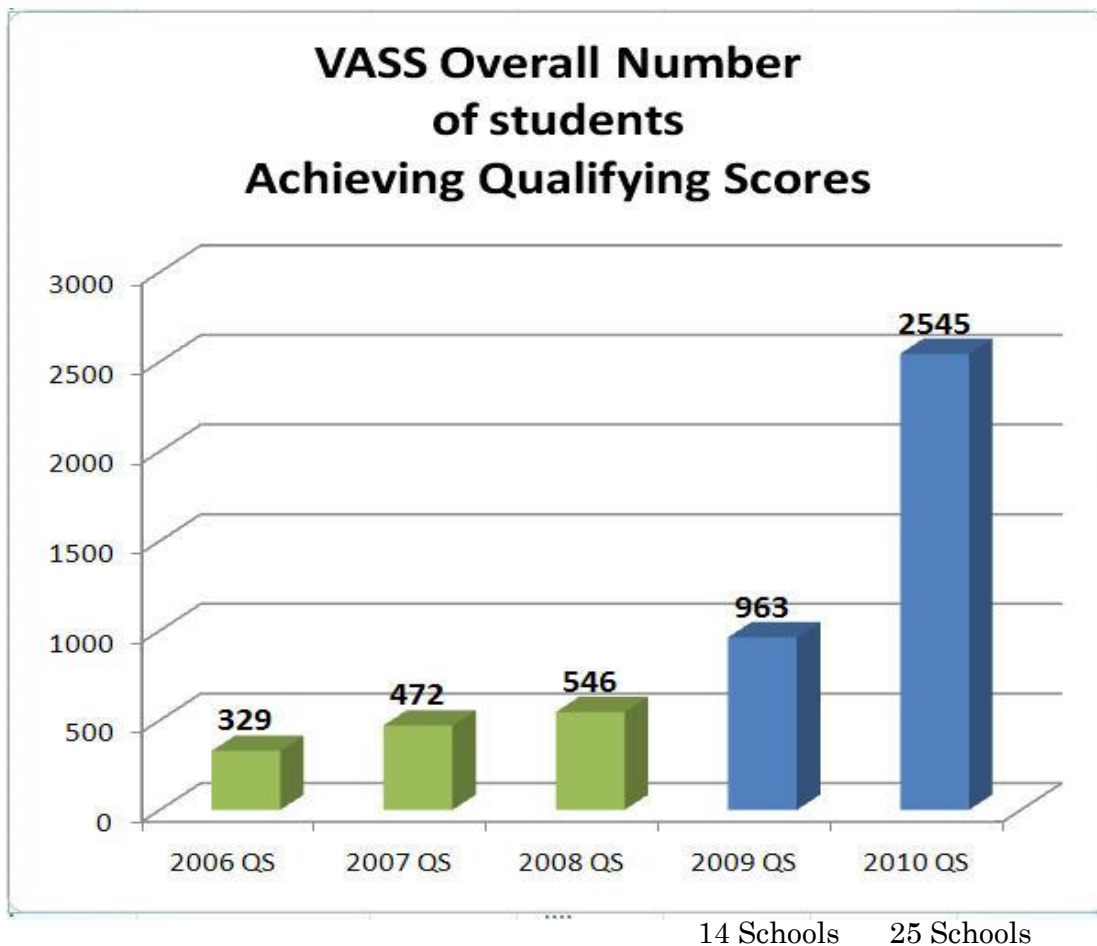




VIRGINIA ADVANCED STUDY STRATEGIES

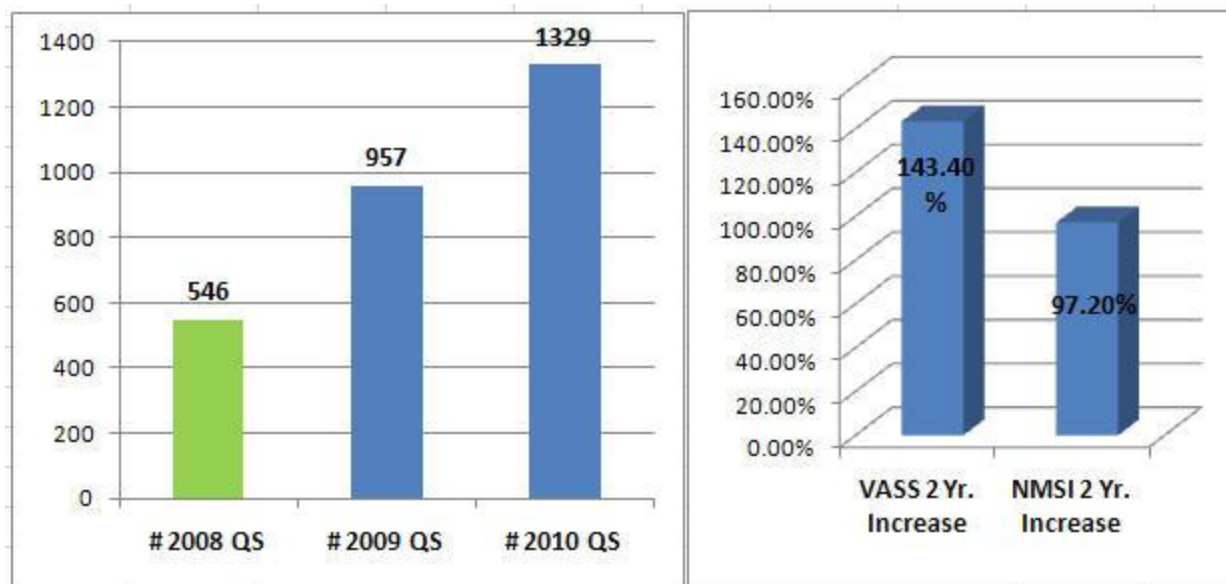
Administering Virginia's Advanced Placement Program in cooperation with the National Math & Science Initiative

VASS Overall Number of students Achieving Qualifying Scores





Cohort I Partner School Increases in MSE Qualifying Scores. 13 Schools - 2009 and 2010 Test Results



State Average increase last year is 7.1%

Source: The College Board.

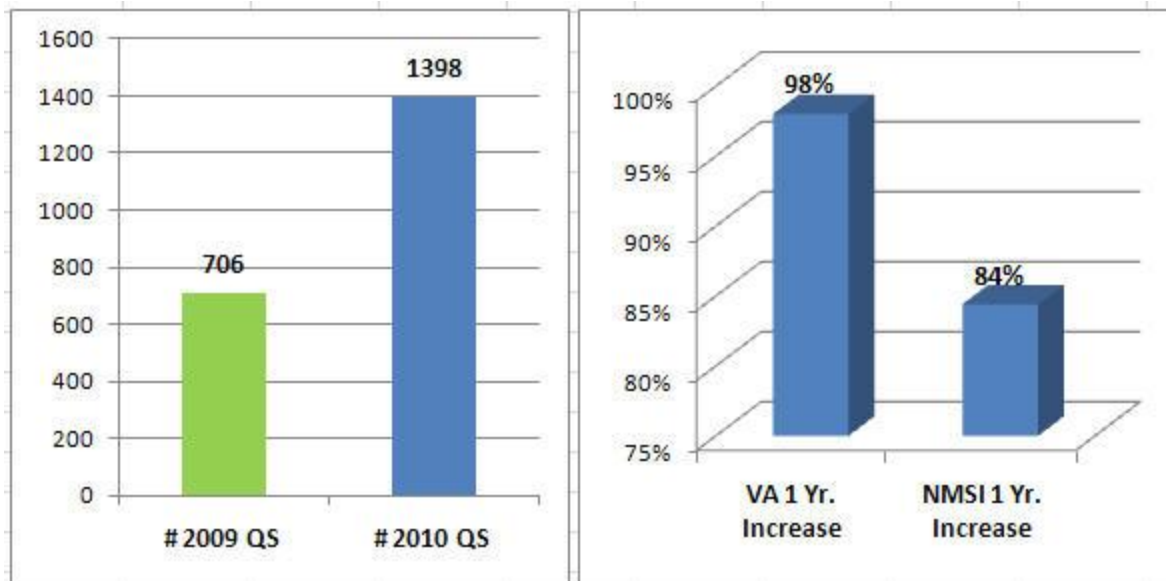




VIRGINIA ADVANCED STUDY STRATEGIES

Administering Virginia's Advanced Placement Program in cooperation with the National Math & Science Initiative

Cohort II Partner School Increases in MSE Qualifying Scores. 12 Schools - 2010 AP Test Results



State Average increase last year is 7.1%

Source: The College Board.

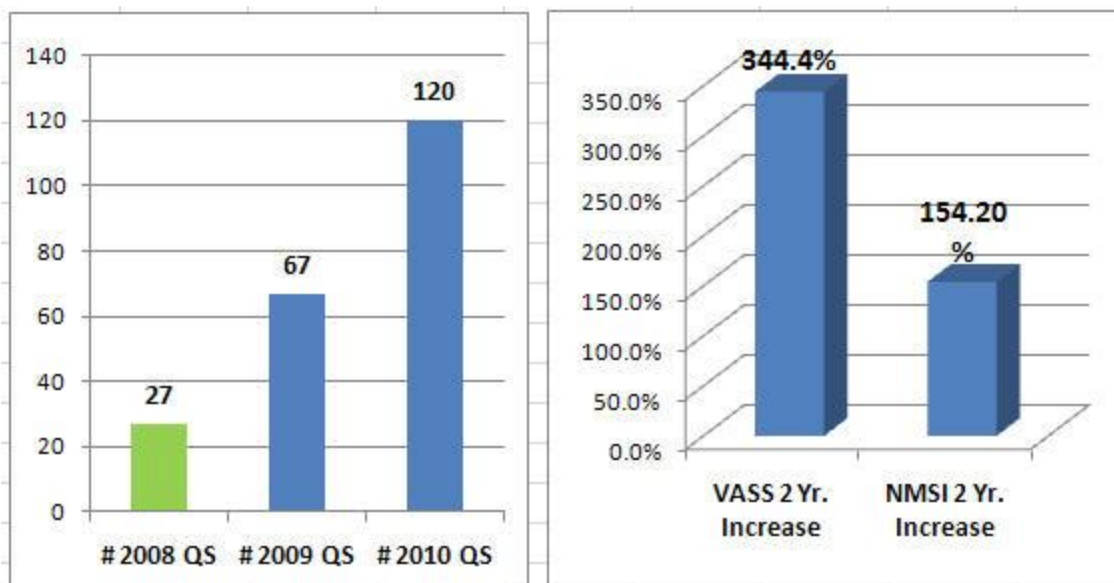




VIRGINIA ADVANCED STUDY STRATEGIES

Administering Virginia's Advanced Placement Program in cooperation with the National Math & Science Initiative

Cohort I Partner School Minority (African American and Hispanic) Increases in MSE Qualifying Scores. 13 Schools - 2009 and 2010 Test Results



Virginia Average growth in 2010 is 11%

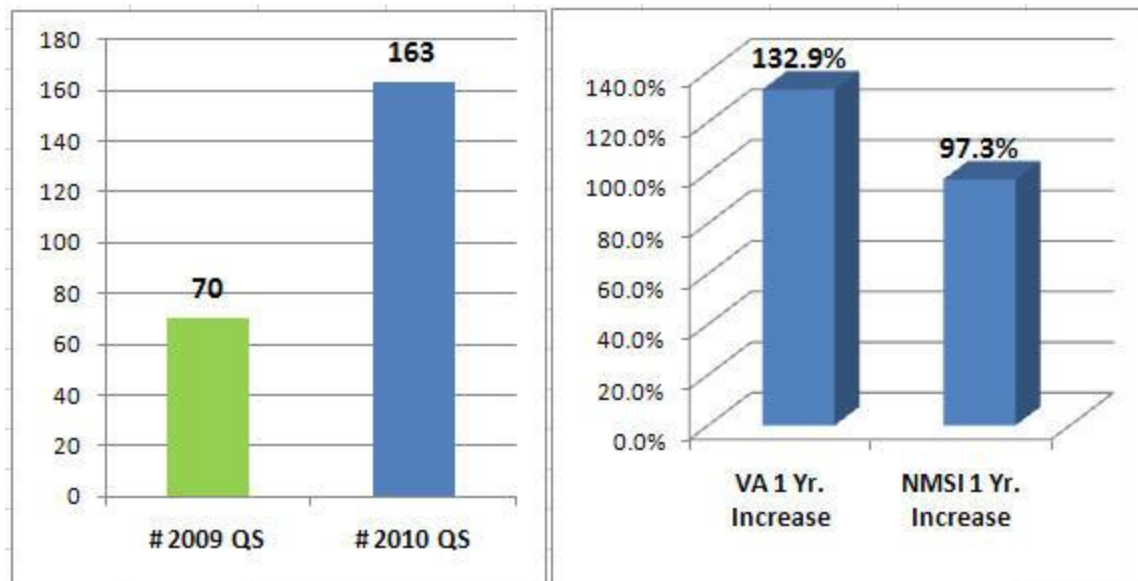
Source: The College Board



VIRGINIA ADVANCED STUDY STRATEGIES

Administering Virginia's Advanced Placement Program in cooperation with the National Math & Science Initiative

Cohort II Partner School Minority (African American and Hispanic) Increases in MSE Qualifying Scores. 12 Schools - 2010 AP Test Results



Virginia Average growth in 2010 is 11%

Source: The College Board.

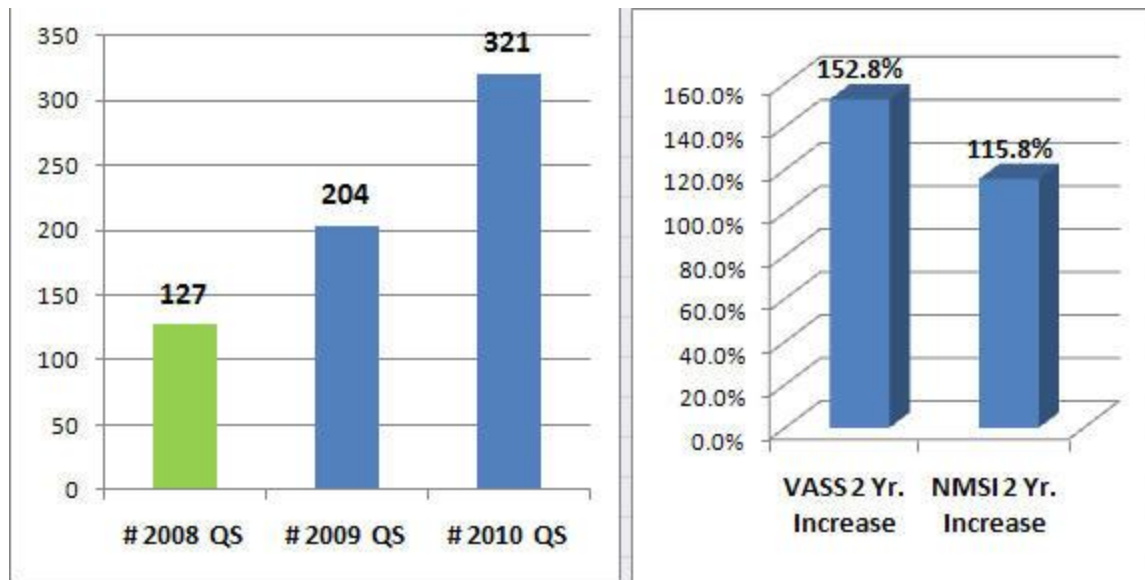


VIRGINIA ADVANCED STUDY STRATEGIES

Administering Virginia's Advanced Placement Program in cooperation with the National Math & Science Initiative

Cohort I Partner School Female Increases in MSE Qualifying Scores.

13 Schools - 2009 and 2010 Test Results

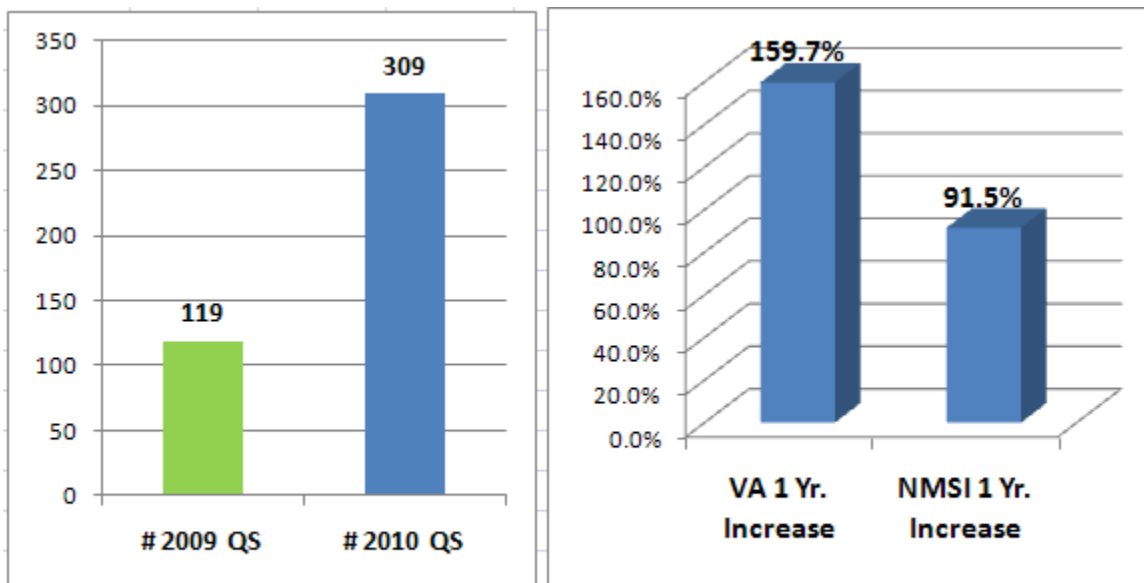


Source: The College Board

National and State Average is less than 10%



**Cohort II Partner School Female Increases in MSE
Qualifying Scores.
12 Schools - 2010 AP Test Results**



National and State Average is less than 10%





VIRGINIA ADVANCED STUDY STRATEGIES

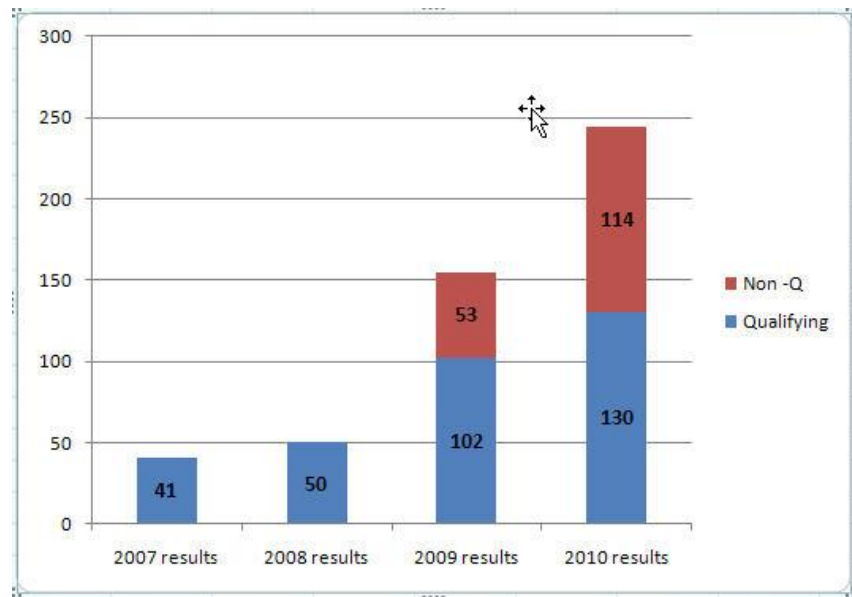
Administering Virginia's Advanced Placement Program in cooperation with the National Math & Science Initiative

Franklin County High School

2010 AP MSE Test Result Data							
	1	2	3	4	5	Total QS	MSE Total
English Lang	0	15	20	10	4	34	130
English Lit	1	6	18	7	2	27	
Calculus AB	8	1	8	9	7	24	09-10 Goal
Calculus BC						0	118
Comp Sci	10	1	2	0	0	2	
Statistics	1	4	6	7	4	17	
Biology	23	8	13	14	8	35	
Chemistry	9	5	8	6	0	14	
Env Sci	7	6	3	1	0	4	
Physics B	7	1	6	0	0	6	
Physics C: M	0	1	1	0	0	1	
QS<3		114		Total Test	278	% CS >2	47%

2009 AP MSE Test Result Data							
	1	2	3	4	5	Total QS	MSE Total
Biology	12	2	7	9	4	20	102
Calc AB	2	3	11	4	8	23	
Calc BC	3		1	3	3	7	
Chemistry	14	2	2	1	2	5	
Eng Lang		11	9	7	4	20	
Eng Lit		3	5	13	1	19	
Env Sci					1	1	
Statistics		1	3	4		7	
QS<3		53		Total Test	155	% CS >2	66%

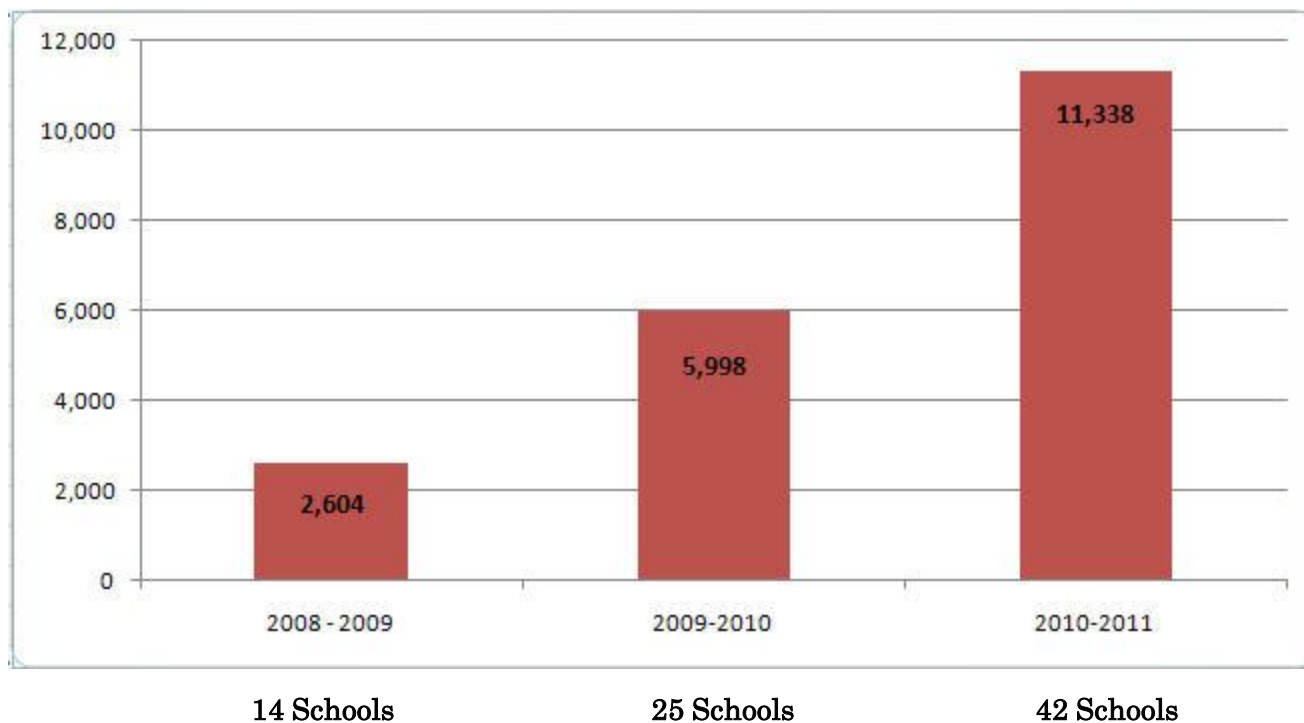
Sample Data Set of a VASS Cohort 1 School Partner





AP Enrollments in VASS Cohort 1, II, and III Partner Schools

in Math, Science and English





VIRGINIA ADVANCED STUDY STRATEGIES

Administering Virginia's Advanced Placement Program in cooperation with the National Math & Science Initiative

VASS Partner Schools for 2010-2011

- Cohort 1 Schools
- Cohort 2 Schools
- Cohort 3 Schools

